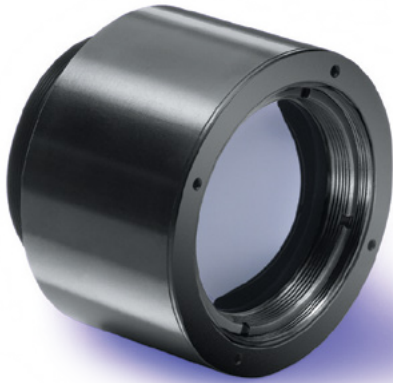
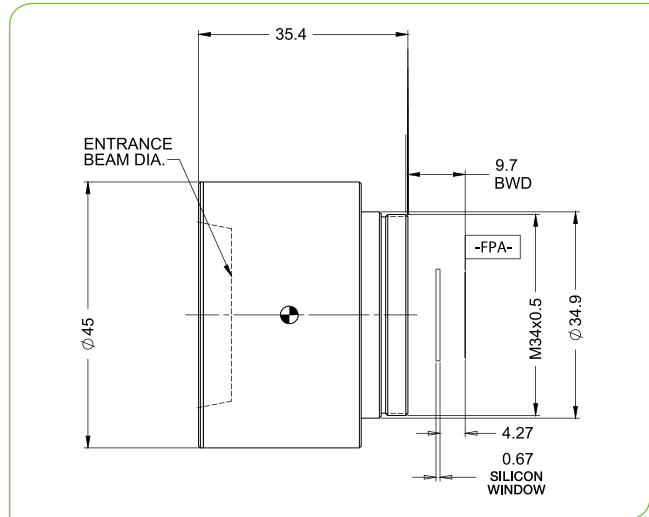


# SupIR 35mm f/1.2, Fixed Athermalized 680111

TYPICAL ICD\*



**HD**  
FORMAT



HFOV	320x240	384x288	640x480	1024x768
17μ	8.9°	10.6°	17.6°	
12μ	6.3°	7.5°	12.5°	19.7°

Property	Value				
<b>Optical</b>					
Focal Length	35mm				
F#	1.2				
Average transmission (8-12μm)	93% (HD)				
Back Focal Length	22.62mm in air				
<b>Mechanical</b>					
Focus Mechanism	Fixed				
Depth of Field	50m to infinity				
Focus Range	1m to infinity				
Weight	102gr				
Max. Dimensions	Ø45mm x 35.4mm				
<b>Environmental</b>					
Operation Temperature	-40°C to +80°C				
Storage Temperature	-55°C to +85°C				
Sealing	IP 67 front element only				
<b>Configurations</b>	<b>Weight (gr)</b>	<b>Dimensions</b>	<b>BWD**</b>	<b>Thread</b>	<b>Coating</b>
680111-005	102	Ø45mm x 35.4mm	9.7	M34x0.5	HD
680111-006					HC

\* The ICD drawing provided here is primarily a representation and may not accurately reflect the product's actual dimensions and specifications. For precise integration specifications contact your local sales representative.

\*\* The BWD value is calculated for a unique detector setup with varying sealing windows in terms of thickness and material. For more details, contact your local sales representative.